



CREATOR 3 PRO

Highly Effective and Professional 3D Printing Equipment




Brand New
Second-generation
Upgrade



Independent
Dual Extruders
Supporting
Water-soluble
Materials Printing



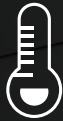
Industrial-grade
Precision $\pm 0.2\text{mm}$



300*250*200mm
Build Volume



120 °C
Build Plate



The extruder
supports up to
320 °C



Wide Range of
Compatible Filaments



New FlashPrint
Slicing Software



Cloud Platform
Printing

Creator 3 Pro realizes further optimization of the extruder structure and printing motion control. It adopts new-type extruders, optimizes the extruder blowing structure and heating assembly, configures the second-generation upgraded leveling sensors, changes the position of extruder sensors, and greatly improves the temperature rise speed of the platform, which enables better printing quality and more efficient printing services.

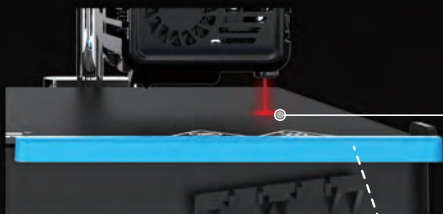


1 MIN

The heating speed of the extruder is increased.

It takes only 1 minute to heat to **200°C**

New dual-fan configuration
for better printing quality

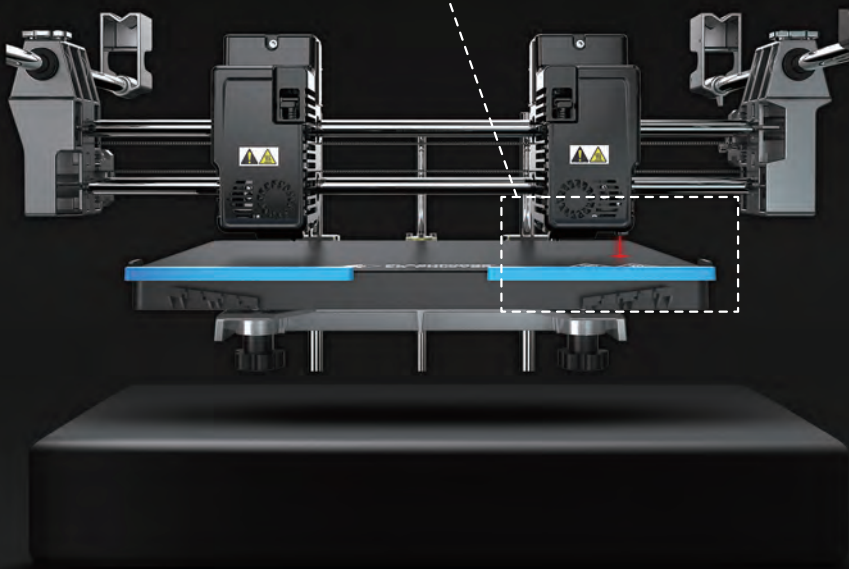


Integral detachable nozzle and heating assembly

Easy maintenance and more convenient operation

New Extruder Sensor Upgrade Adjustment

It improves the success rate of leveling and makes the printing positioning more accurate.





0.4mm
Stainless Steel



0.6mm
Stainless Steel



0.8mm
Stainless Steel



Highly durable & multi-caliber nozzle
which can heat up to 320°C



0.4mm Carbon Steel
Available for printing carbon fiber*
composite materials

* The carbon fiber composite materials are PACF



0.6mm Carbon Steel
Available for printing carbon fiber*
composite materials



0.8mm Carbon Steel
Available for printing carbon fiber*
composite materials

Build Plate Heating Rate Comparison

3 MIN
20 MIN
14 MIN



Creator 3 Pro

For Creator 3 Pro, it takes only **3 MIN** to heat up the build plate to 110°C.

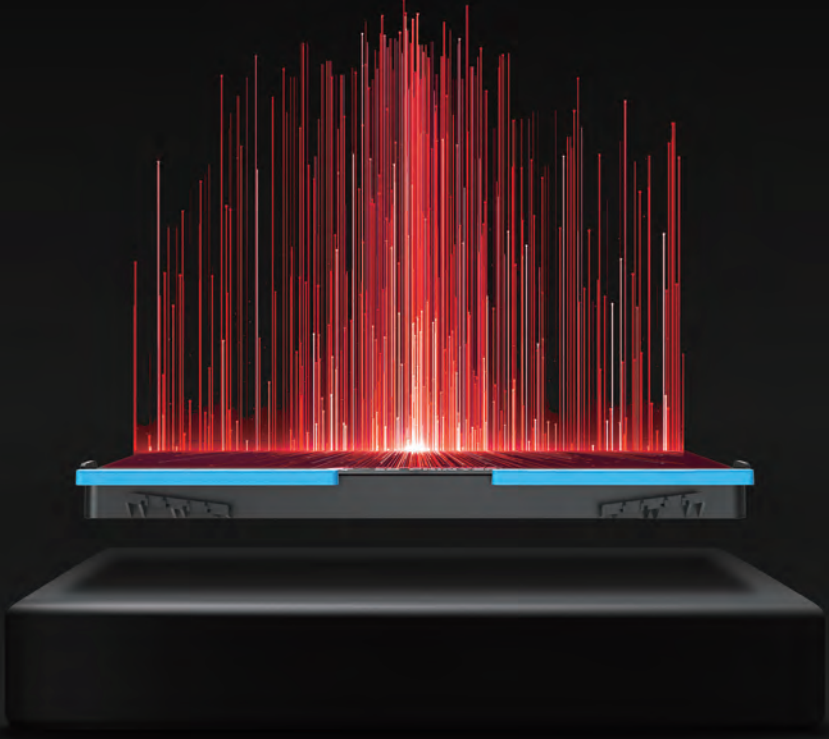
For the 3D printer of some brand, it takes 20 minutes for the build plate to heat up to 110°C.



It takes only 3 minutes to heat up the build plate to 110°C

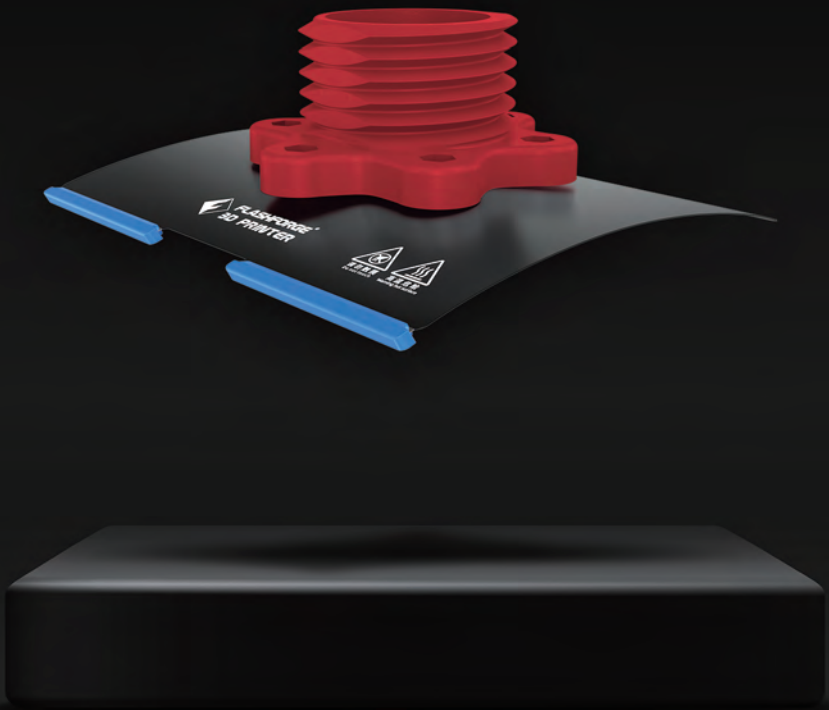


The heating speed of the build plate is increased by 5 times



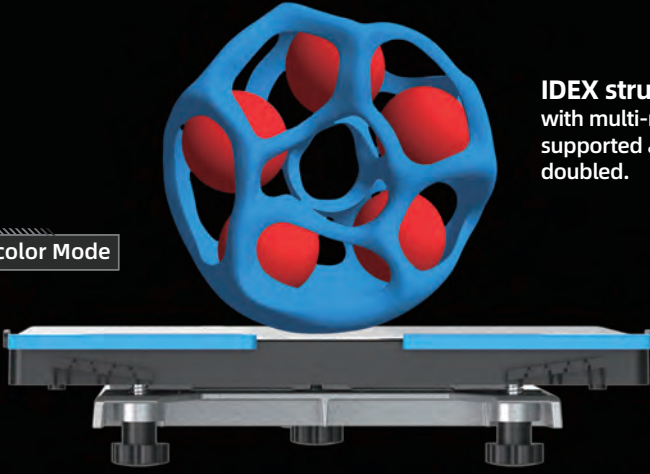
Flexible Magnetic Steel Plate Platform

Excellent thermal conductivity and special platform sticker to enhance the adhesion of printing materials

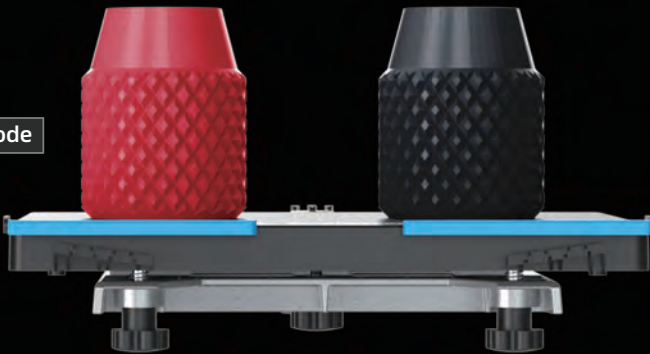


IDEX structure,
with multi-mode printing
supported and efficiency
doubled.

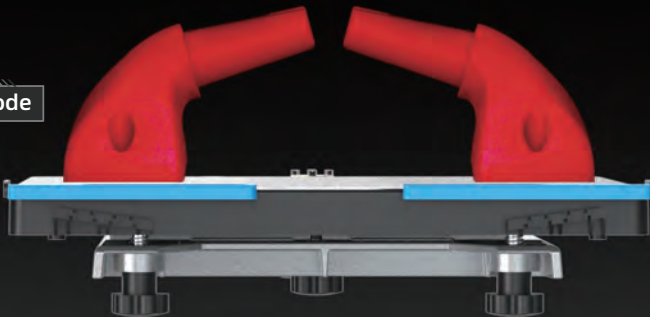
Dual-color Mode



Duplicate Mode

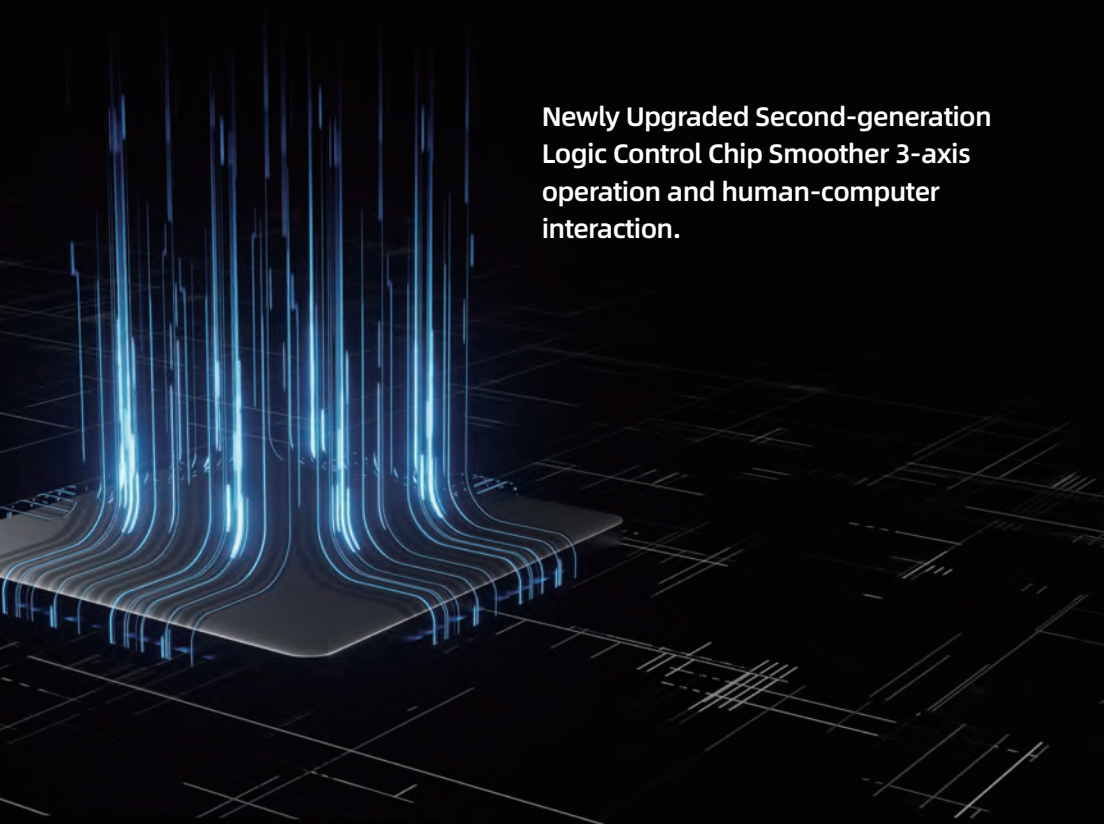


Mirror Mode





**Newly Upgraded Second-generation
Logic Control Chip Smoother 3-axis
operation and human-computer
interaction.**



Technical Specifications

Extruder Type	IDEX (Independent dual extruders)
Printing Precision	± 0.2 mm
Build Volume	300 x 250 x 200 mm
Nozzle Diameter	0.4 mm (0.6/0.8mm)
Print Speed	10~150 mm/s
Maximum Extruder Temperature	320°C
Filament	PLA / ABS / PA / PC / PVA / HIPS / PETG / Wood ASA / PA-CF
Connectivity	USB / Wi-Fi / Ethernet
Platform Heating Temperature	120°C
Auxiliary Leveling	√
Out of Filament Reminder	√
Replaceable Platform	√
Resume Printing After	√
Power Failure	√
Touch Screen	4.3-inch
Flexible Magnetic Platform	√
HEPA13 Air Filter	√





Follow Us

Zhejiang Flashforge 3D Technology Co., Ltd.

Address: No.518 XianYuan Road, Jinhua City, Zhejiang Province, China

Service Hotline: +86 579 82273989

support@flashforge.com