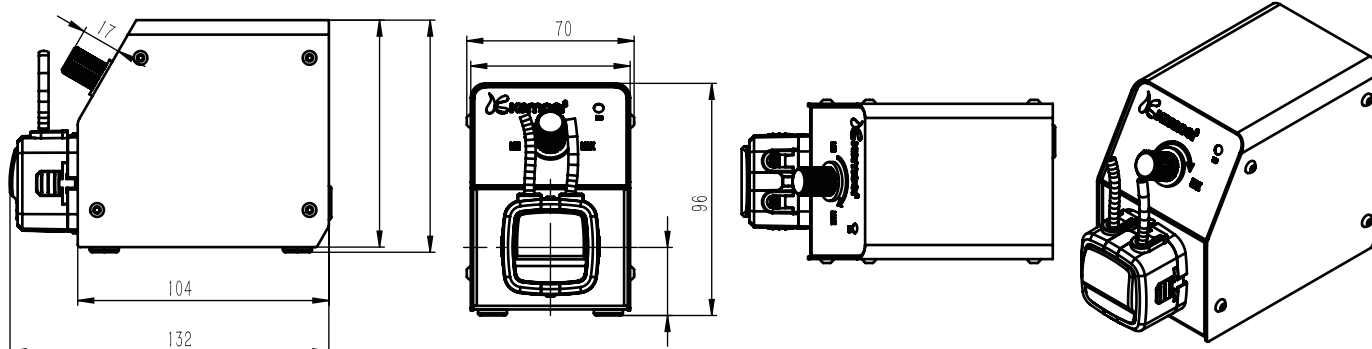


- Low cost to adjust the flow rate, multiple pumps in one
- Convenient and quick replacement of pump tube
- Low noise, small space occupation
- Simple structure, maintenance-free
- With three rollers, moderate pulsation
- Flow rate range: 2.6~41.5ml/min

## Dimensional drawing

Unit: mm



Part No	Power supply	Silicone tube	BPT tube	Flow rate ml/min
CK.10.36.0645	DC24V	1X3.3	1X3.3	4-10
CK.10.36.0646	DC24V	2.0X4.0	2.0X4.0	9.3-32
CK.10.36.0647	DC24V	2.5X4.5	2.5X4.5	14.6-41.5

## Parameter

BPT pump tube length 135 (exposed 29.5mm)

Working environment: ambient temperature 0-40 °C relative humidity <80%

Bare metal weight: 500g packaging weight 700g (including power supply)